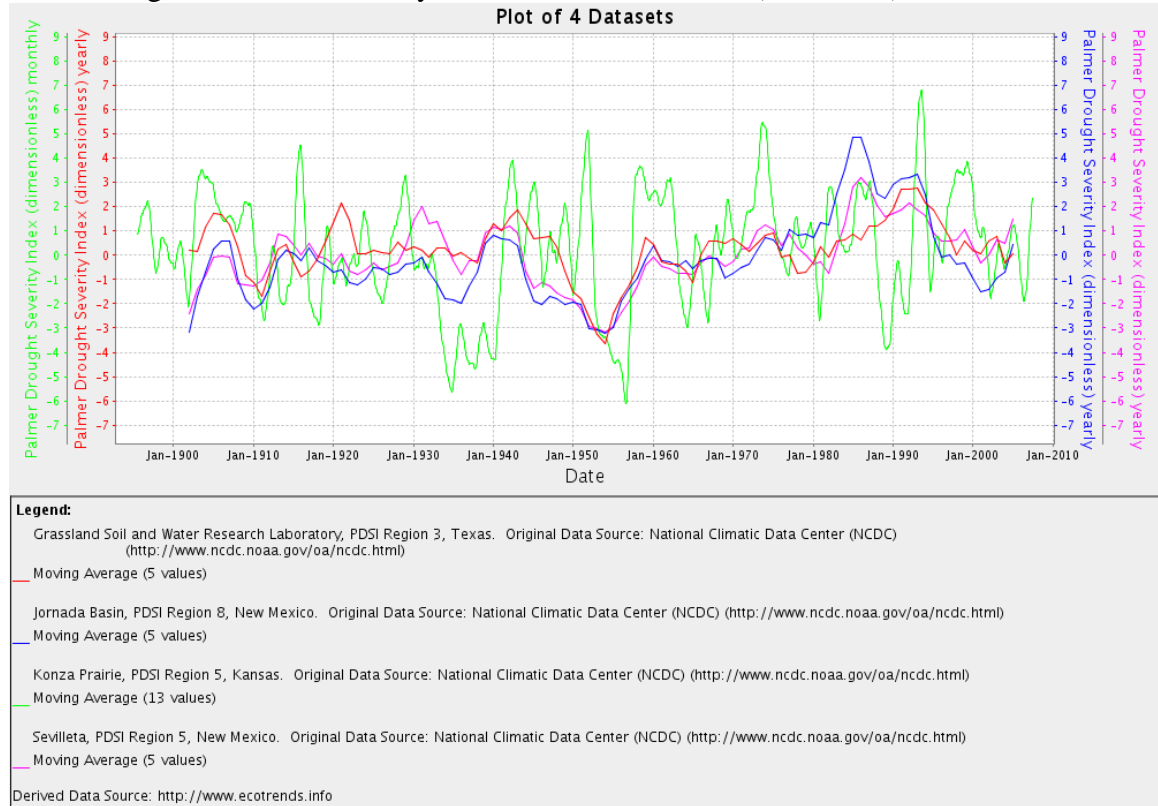


Hypothesis: In grassland areas of mixed C3 and C4 that have experienced increasing temperature, increased in C4 species have occurred. In mixed grassland areas that have experienced changing precipitation, the proportion of C4 subtypes and subfamilies has changed in the expected direction.

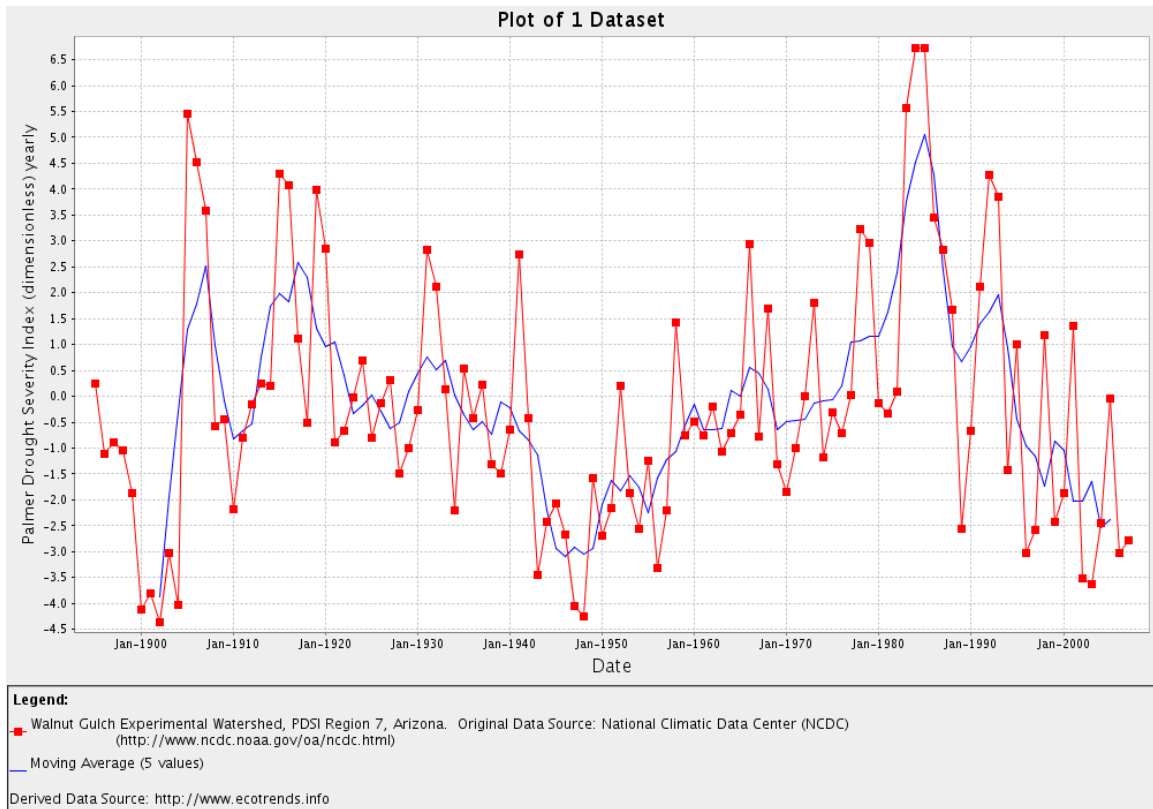
have found that from 1950 to 1990, drought seemed to steadily decrease at several sites (Ecotrends)



At the NCDC, I could not find easy maps of climate change. I looked at the one from our seminar on LUAP and saw that Arizona and California had a good deal of temperature change

At ecotrends, I used the map to get the names of the Arizona and southern California ecosystems. Walnut gulch had drought data:

ESA, Education and Diversity Programs Office
Future of Environmental Decisions
2009 Faculty Development Workshop: Using Continental-scale Data to Teach Undergraduate Ecology



Precipitation has changed, temperature has not:

ESA, Education and Diversity Programs Office
Future of Environmental Decisions
2009 Faculty Development Workshop: Using Continental-scale Data to Teach Undergraduate Ecology

