



Explorers **by nature.**

Information... In motion

Keri Barfield, Tracy Friday,
& Jason Best
BRIT



BOTANICAL RESEARCH
INSTITUTE OF TEXAS

Plant to planet.™

Education in the Past



- Primarily used printed materials
- Limited access
- Funding

Today's Education

8 -18 year olds in the US spend one quarter of their media time using multiple media



24% of 12-18 year olds use another media most of the time while watching TV

<http://zeitgeistandstuff.wordpress.com/tag/hulu/>

Today's Education



“If we teach as we taught yesterday, we rob our children of tomorrow.”

John Dewey

How can one incorporate
technology in today's
classroom?

Digital, mobile devices

- Display
- Microphone
- Touch interaction
- Voice interaction
- Global Positioning System
- Orientation
- Time
- Camera
- Local storage
- ?

Digital Microscopes



What can happen when
information and
knowledge are digital?

QR Codes

Open Science Network

Ask me about
teaching
Ethnobiology



www.opensciencenetwork.net

Apps for the Classroom

- Earth Viewer
- Geotimescale
- TED
- Star Walk/ Sky map
- Dropbox
- 3D Cell Strain
- Flashcards & Ankidroid Flashcards
- The Chemical Touch (Lite)
- Soilweb
- NatureTap
- Taxonomy
- Leafsnap
- 101 Science
- Multiconvert

BRIT GUIDE TO TEXAS RANGE AND PASTURE PLANTS

Field Guide

Flashcards

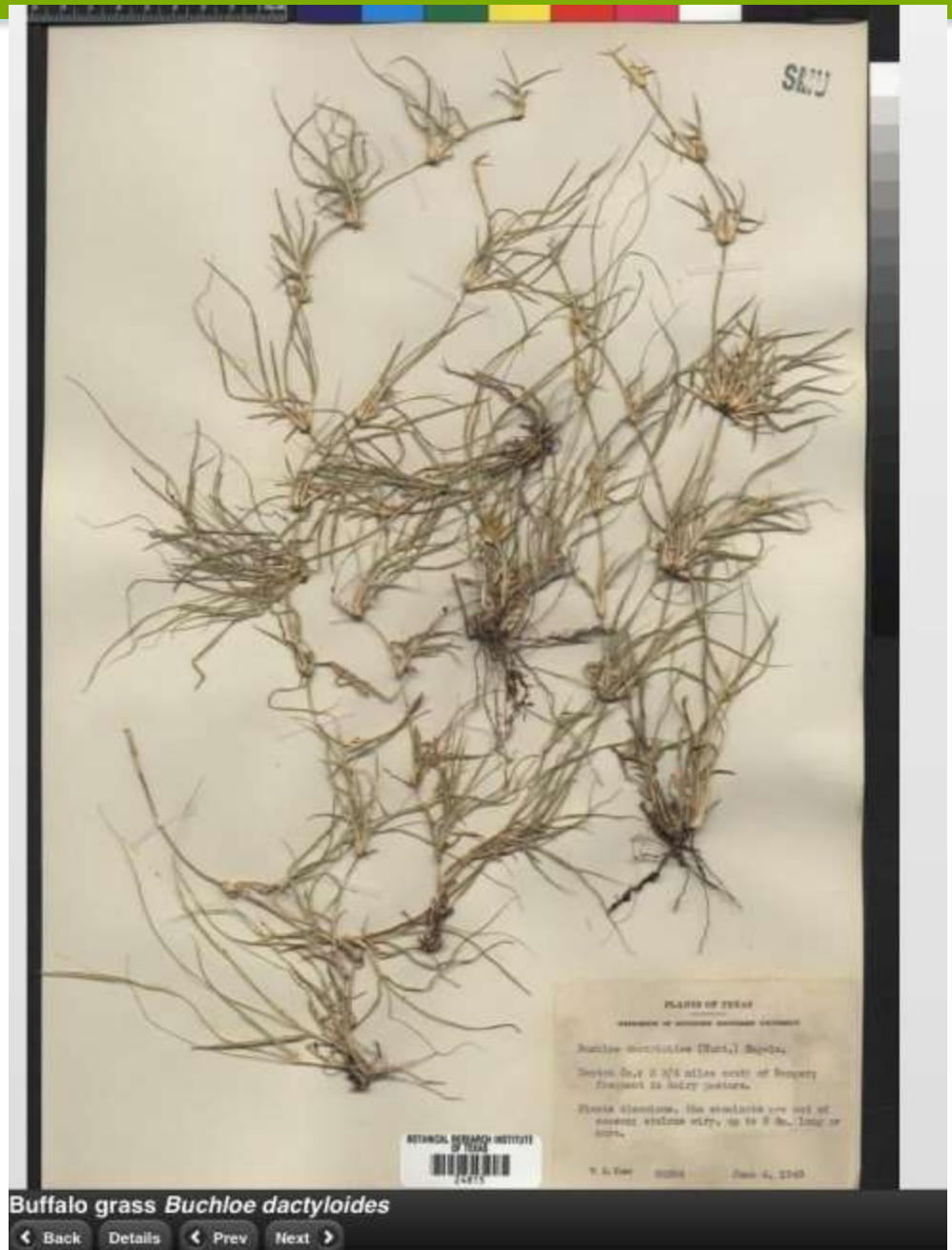
ID Quiz

About

<http://www.brit.org/rangeplants>



Specimen Image



Field Guide	
Buffalo grass <i>Buchloe dactyloides</i>	➤
Buffel grass <i>Pennisetum ciliare</i>	➤
Bur-clover <i>Medicago polymorpha</i> var. <i>vulgaris</i>	➤
Burro grass <i>Scleropogon brevifolius</i>	➤
Bush muhly <i>Muhlenbergia porteri</i>	➤
C	
California cottontop <i>Digitaria californica</i>	➤
Canada wild rye <i>Elymus canadensis</i>	➤
Cedar caric sedge <i>Carex planostachys</i>	➤
Cherokee caric sedge <i>Carex cherokeensis</i>	➤
Common broomweed <i>Amphiachyris dracunculoides</i>	➤
Common buttonbush <i>Cephalanthus occidentalis</i>	➤
Common carpet grass <i>Axonopus fissifolius</i>	➤
Common curly-mesquite <i>Hilaria belangeri</i>	➤
Coyotillo <i>Karwinskia humboldtiana</i>	➤
Crimson clover <i>Trifolium incarnatum</i>	➤
D	
Dallis grass <i>Paspalum dilatatum</i>	➤
E	
Eastern gama grass <i>Tripsacum dactyloides</i>	➤
Engelmann's daisy <i>Engelmannia peristenia</i>	➤
F	
Fall witch grass <i>Digitaria cognata</i>	➤
Field Mustard <i>Conrotundus sp.</i>	➤

Species List

Species Overview Pages



Buffalo grass

Buchloe dactyloides

(boo-KLO-ee DACK-till-OY-deez)

Description: Buffalo grass (*Buchloe dactyloides*) is a perennial grass in the Poaceae family.

Scientific name: *Buchloe dactyloides*

Synonym(s): *Bouteloua dactyloides*

Common name: Buffalo grass

Growth season: warm

Origin: native

Wildlife value: fair

Grazing value: good

More Information (external sites)

[BRIT Digital Herbarium](#)

[USDA PLANTS](#)



Alfalfa
Medicago sativa

(meh-dee-KAH-go suh-TEE-vuh)

Description: Alfalfa (*Medicago sativa*) is a perennial legume in the Fabaceae family.

Scientific name: *Medicago sativa*

Common name: Alfalfa

Growth season: warm

Origin: introduced

Wildlife value: good

Grazing value: good

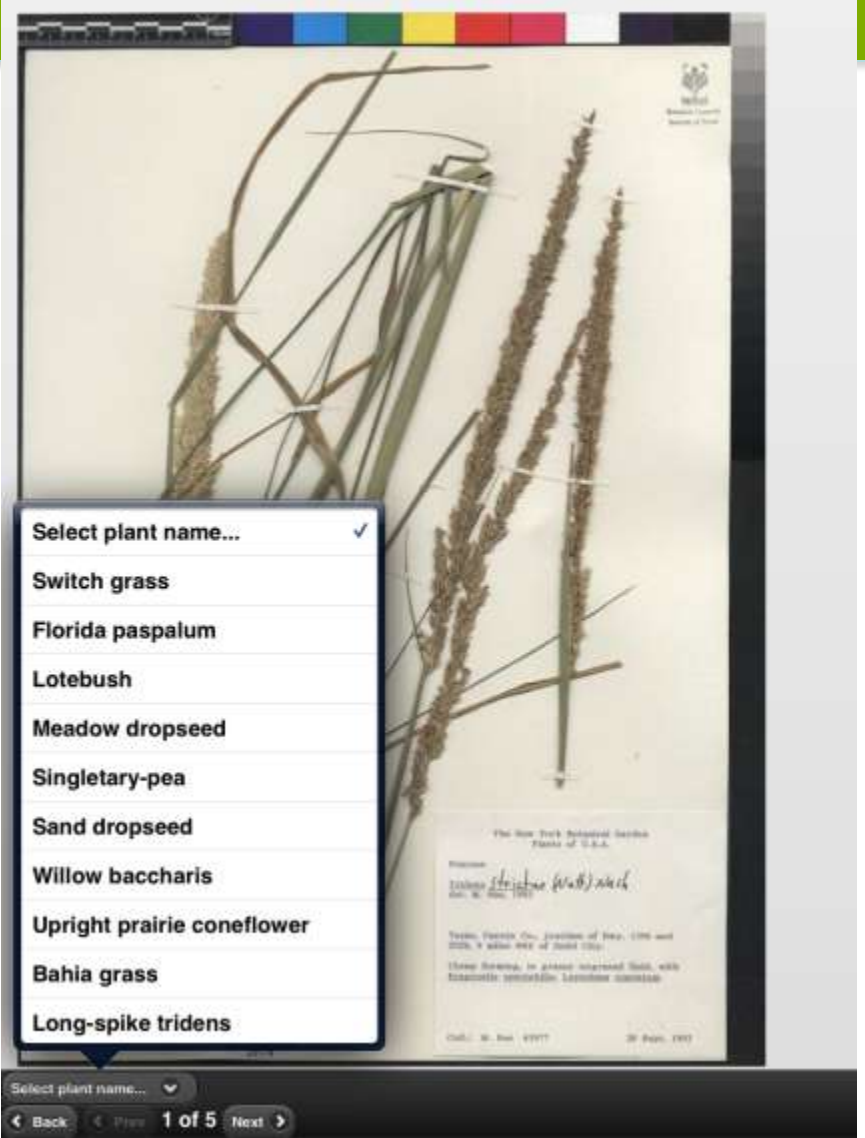
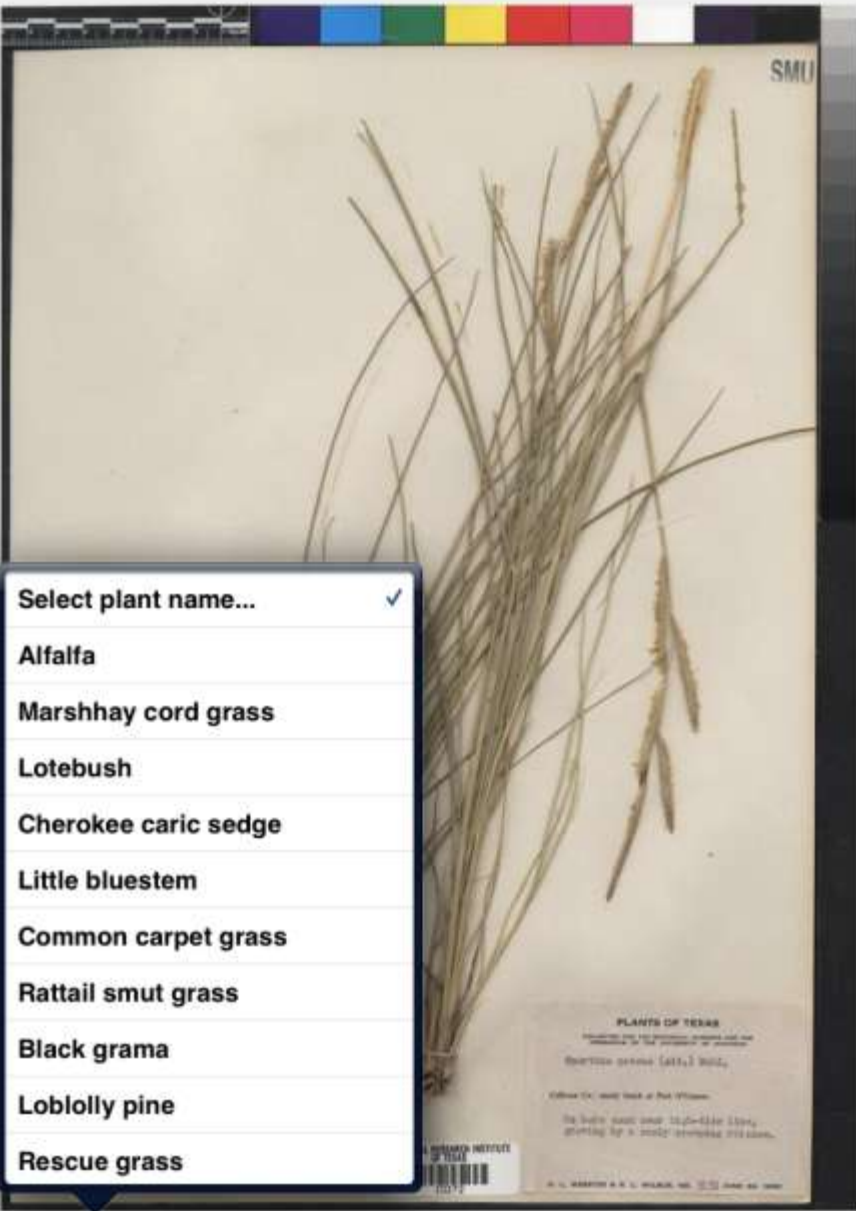
More Information (external sites)

[BRIT Digital Herbarium](#)

[USDA PLANTS](#)

Alfalfa *Medicago sativa*

◀ Back Image ▶ Prev Next ▶



Quiz

Home

Welcome!

We are ethnobiology educators. Our mission is to help other ethnobiology instructors by providing a convenient location to find a variety of instructional materials for ethnobiology courses and curricula. All materials on our links are freely shared using an open-systems philosophy. We welcome additions to this collection, as well as its use.

The OSN project creates links to resources that are stored elsewhere, such as on university web servers and cloud-based resources. This helps ensure that the most recent versions of the materials are available.

Peer reviews are available for many of the resources. We also welcome additions to this set of reviews.



Participants at the 2012 OSN Workshop in Fort Worth, Texas.

Participating in the Open Science Network

Link: [The Ethnobiology Focus](#)

Our focus is on the scientific discipline of ethnobiology. Do you want to know more about this topic? Check the link for more information.

Link: [Submitting Existing Resources](#)

This link tells you how you can contribute links to resources which you would like to share on this site. Examples are links to course syllabi or a lesson plan for a laboratory exercise. Look at our existing resources (listed in the column on the right) to get ideas of what you might contribute to enhance this shared collection.

Link: [Creating New Resources](#)

We can help if you have materials that you would like to share, but which are not accessible with a web link. Click on the link to see some self-help suggestions. If these are not adequate or appropriate, click on the link below to see how to contact people who can help.

Link: [The OSN Effort and How You Can Join](#)

Here is where you can find out more about us. This link also has contact information. Please join us if what we are doing matches your interests and needs.

Access to the OSN Resources

Link: [Institutions](#)

These links provide information about ethnobiology activities at particular and other institutions at which there are ethnobiological activities.

Link: [Ethnobiology Modules](#)

We provide peer-reviewed modules that will increase the quality of ethnobiology curriculum. The curriculum modules are each major content elements which are general in nature.

Some of the modules are organized into units that support a single course or a course (e.g., a demonstration on how to dye cloth with natural products).

Link: [Lesson Plans](#)

These are materials which provide detailed information about individual lessons.

Link: [Course Syllabi](#)

The materials in this section contain items which relate to a single course or are for an entire course (e.g., Introduction to Ethnobotany).

Link: [Curricula](#)

This section of the website has listings of courses which make up a program. It shows how topics can be woven together into something more than a single course.

Link: [Resources](#)

There are a number of resources available which will help us understand ethnobiology and a host of other things. Look for these types of resources on this link.

Ethnobiology Curriculum Guidelines Suggestions

"The Vision and Change in Undergraduate Ethnobiology Education in the U.S." is a document that outlines the vision and change in undergraduate education of ethnobiology, undergraduate education, and improving science curriculum development of ethnobiology undergraduate education among ethnobiology educators. Your feedback is very important to the field of ethnobiology. The document will be updated on a regular basis.